

Using Avance® Solo

A few things to keep in mind if you are receiving treatment with the Avance Solo Negative Pressure Wound Therapy (NPWT) system.





Contents

Introduction to Negative Pressure Wound Therapy (NPWT)

Get acquainted with NPWT and Avance Solo **04–05**

Things to keep in mind while using Avance Solo

Learn about what to do and what to avoid when receiving treatment with Avance® Solo NPWT system **06–07**

How to care for your Avance Solo

Information on how to clean and care for your medical device and what the audiovisual signals mean **08–11**

Note: Always read the label , follow the Instructions for Use. You should immediately contact your healthcare professional if you experience any problems. This includes bleeding, elevated blood pressure or issues with the device. For any questions, reach out to your caregiver:

Name: _____

Phone: _____

Email: _____

You are receiving treatment with **Avance® Solo NPWT** from Mölnlycke®. This brochure will inform you on how to use and care for the device. Please read it carefully.

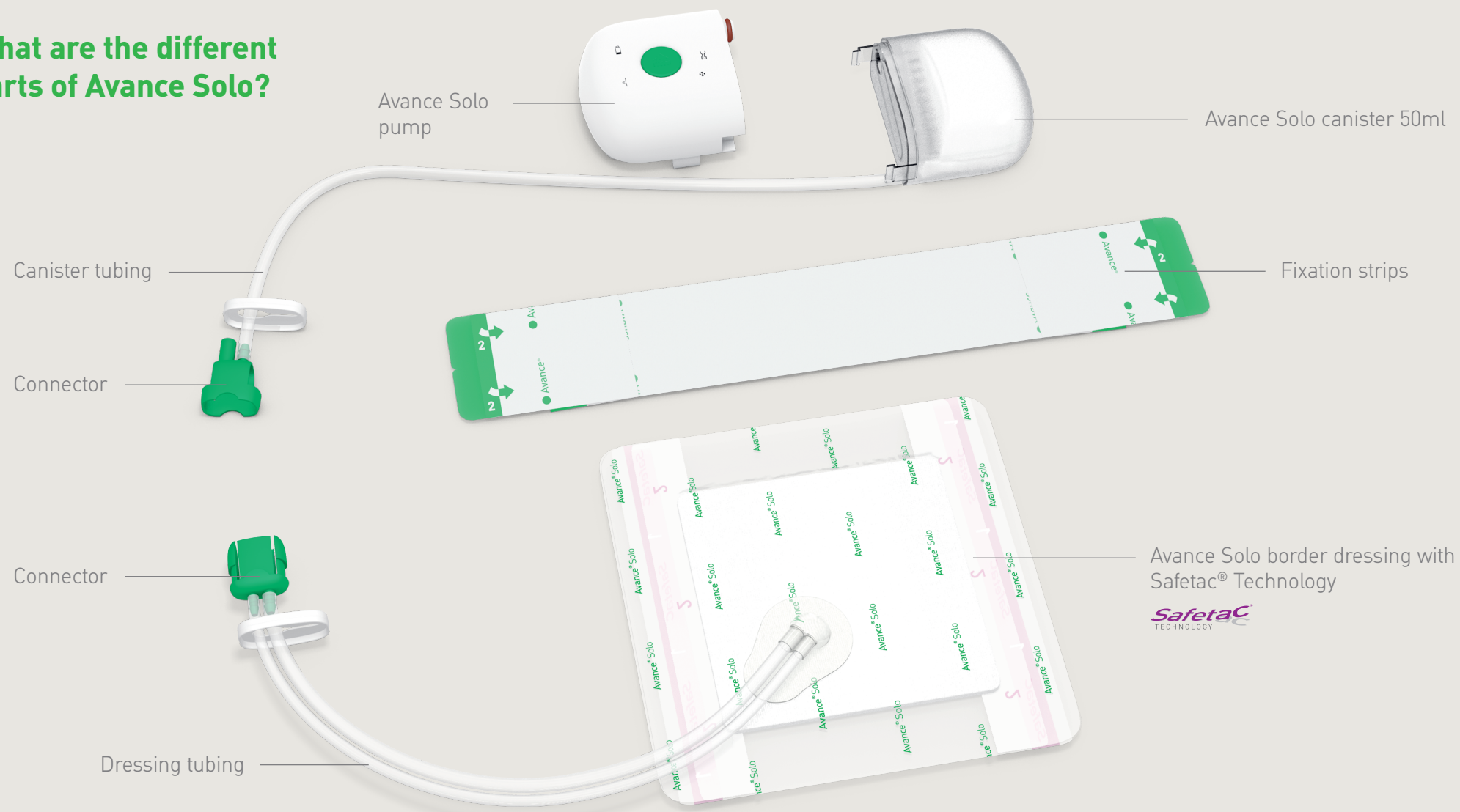
What is Negative Pressure Wound Therapy (NPWT)?

Negative Pressure Wound Therapy (NPWT) is a method of treating wounds using suction. The dressing is airtight and the pump creates a subatmospheric pressure, clearing the wound of exudate and fluids.

What are the benefits of NPWT?

- It helps support healing in complex and slow-to-heal wounds¹
- It improves a wound bed preparation that supports healing¹
- It helps reduce swelling and protects the wound from external contamination²

What are the different parts of Avance Solo?



Things to keep in mind while using Avance® Solo

Avance Solo is a medical device and it is important that you properly care for it. For complete instructions, warnings and precautions see the patient user manual, included in the product package.

Do not:

- Change dressings yourself.
- Expose the dressing, device, canister or tubing to jets of water, extreme cold or heat (operational temperature 5–40°C).
- Submerge the dressing, pump, canister or tubing into water.
- Use on an aircraft. Remove batteries during air travel.
- Disassemble or tamper with the device.
- Let children or pets have access to the device.

Important features:

- Make sure you are aware of the visual and audible alarms for leakage, blockage and low battery displayed by Avance Solo pump. See page 10-11 for a list of signals and alarms.
- In order to deliver continuous regulated negative pressure, the pump cycles and a pulsing sound occurs. This is completely normal and a confirmation that the system is operating²⁻⁷. If needed, a nightcase to reduce sleep disturbance can be provided by request with your healthcare professional.
- Check that the dressing has contracted and is firm to the touch. Remember to immediately contact your caregiver for this device if you experience any issues.

Make sure to wear and place the device in a way that avoids:

- Entrapment or strangulation, i.e. the tubing twisting around a body part or limb.
- Kinking or blocking the tubing.
- When using the belt clip, ensure that it is positioned to either side of your waist. If, for comfort or convenience, you position the device to the front, remove prior to sitting to avoid the pump being pushed out of the belt clip.

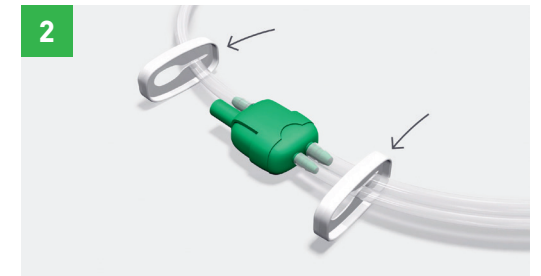
How to manage daily hygiene routines

Light showering is allowed, but it's important to disconnect the pump to keep it away from a direct contact with water. The dressing is shower-proof, but should not be exposed to direct jets of water. You must follow the guide below before light showering to avoid contamination.

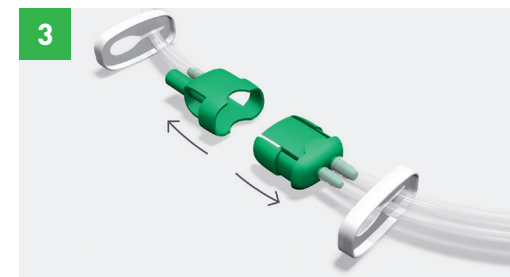
Follow these steps when taking a light shower:



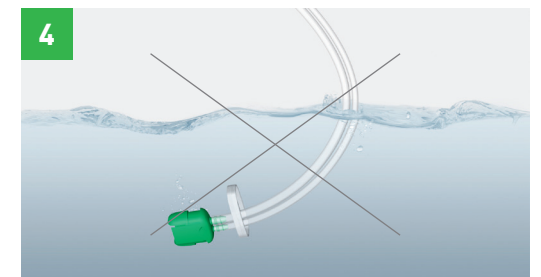
1 Pause the pump by pressing and holding the green start button and release after two (2) seconds. The pump will emit two beeps to confirm it is in a pause mode



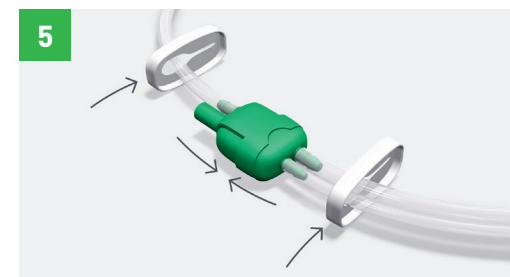
2 Slide the tubing clamps up close to the green connectors and push both clamps across to close the tubing.



3 Disconnect the green connectors and place the pump housing with tubing safely away from the shower. Ensure there is no fluid leakage once disconnected.



4 Ensure that the dressing tubing is not submerged into water when taking a shower. Secure the dressing tubing with some tape if needed.



5 After showering, recouple the green connectors. Once connected, release the two clamps.



6 Restart therapy by pressing and holding the green button for two (2) seconds.

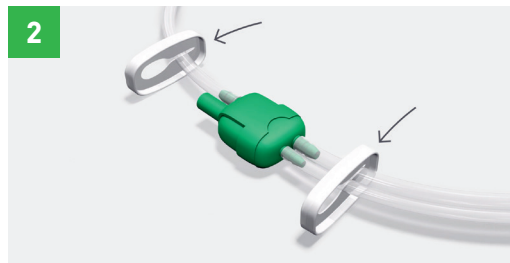
How to care for your Avance® Solo

Changing the canister

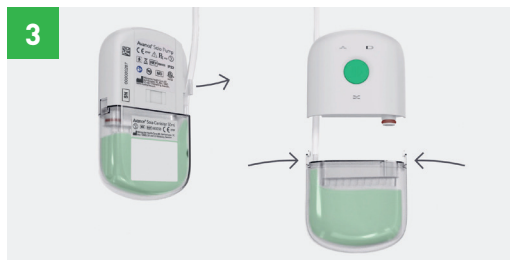
You can see if the canister needs to be changed by looking through the transparent window on the back, as well as the audible pump blocking alarm. Make sure you practice this with your healthcare professional on receiving your Avance Solo device.



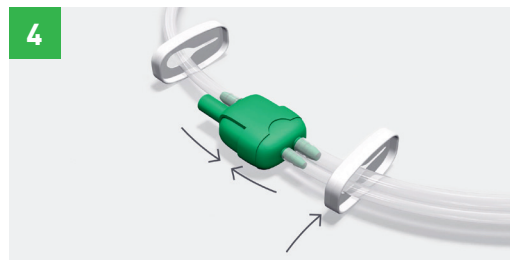
1 Pause the pump by pressing and holding the green start button and release after two (2) seconds. The pump will emit two beeps to confirm it is in a pause mode.



2 Slide the tubing clamps up close to the green connectors and push both clamps across to close the tubing. Ensure there is no fluid leakage once disconnected.



3 Release the tubing at the back of the pump. Press hard on the side-mounted plastic tabs and pull while gently rocking to disconnect the canister. Connect the new canister. You should expect the canister to be a firm fit. This is normal and necessary for maintaining an effective seal.



4 Recouple the two green connectors. Release the clamps on both the canister and the dressing tubing and restart the pump by pressing the green start button for two (2) seconds. Check that the negative pressure is active, the dressing should be contracted and firm to the touch.

Changing the batteries

You must change the two (2) batteries if there is a low battery alarm or after seven days. Only use AA 1.5V GP15LF lithium batteries. You have been provided with 4 x batteries for a total of up to 14 days' wear time if required.

To replace the batteries, perform the following steps:

- If the pump is still active, pause the pump by pressing and holding the green start button and release after two (2) seconds.
- Open the battery compartment by sliding the lid.
- Remove the batteries and discard appropriately.
- Insert new batteries, ensuring that the positive terminal (marked +) and negative terminal (marked -) of each battery matches the +/- label in the battery compartment.
- Close the battery compartment lid.
- Restart the pump by pressing and holding down the green start button, release after two (2) seconds. Check that the negative pressure is active, the dressing should be contracted and firm to the touch.



Cleaning the device

Occasional cleaning of the pump can be performed by wiping with a damp cloth or with a non-abrasive detergent. Do not put the pump under running water.







What do the signals from Avance® Solo mean?

The device uses various signals to alert you if an operation is not working correctly or if you need to take action. Please make sure that you are able to hear and understand the various signals.

Note: The regular pulsing sound that you might hear from the pump is completely normal and a confirmation that the system is operating. There is also a night case available for your convenience. Please request from your healthcare professional.

Alarms and troubleshooting

Audible and visual display description	Possible cause	How to troubleshoot
 <p>The leakage indicator light flashes once every second. The pump repeatedly alarms with a beep and will then pause.</p>	<p>An air leakage has been detected.</p>	<p>To correct the leak: Press around the dressing border and the strips to improve contact with the skin. Check that the canister is attached to the pump, that the canister tubing is attached to the canister and that the dressing tubing is connected to the canister tubing. Press and hold the green start button for two (2) seconds to restart the pump. If the leakage is not resolved, the pump will again alarm for leakage and then pause the therapy. If this happens, contact your healthcare professional.</p>
 <p>The blockage indicator light flashes once every second. The pump repeatedly alarms with a beep and will then pause.</p>	<p>The canister is full or there is a blockage in the tubings.</p>	<p>To correct the blockage: Ensure that the tubing is not clamped or kinked. If the canister is full, change the canister according to the instructions on page 8 in this document or in the user manual (included in the product package) under section 7.3. Press and hold the green start button for two (2) seconds to restart the pump. If blockage is not resolved, the pump will again alarm for blockage and then pause the therapy. If this happens, contact your healthcare professional.</p>
 <p>The low battery indicator light flashes once every five (5) seconds. When less than four (4) hours of battery power remain the low battery indicator light flashes once every second and the pump repeatedly alarms with a beep.</p>	<p>The batteries are low.</p>	<p>To change batteries: Change the batteries according to the instructions on page 9 in this document or in the user manual (included in the product package) under section 7.4. Only use the type and model of lithium batteries specified for this product by Mölnlycke Health Care. Press and hold the green start button for two (2) seconds to restart the pump.</p>
 <p>All indicator lights flash at the same time once every second and the pump repeatedly alarms with a beep.</p>	<p>Alarm for an internal failure and the pump cannot be started.</p>	<p>Contact your healthcare professional.</p>

Proving it every day

At Mölnlycke®, we deliver innovative solutions for managing wounds, improving surgical safety and efficiency, and preventing pressure ulcers. Solutions that help achieve better outcomes and are backed by clinical and health economics evidence.

In everything we do, we are guided by a single purpose: to help healthcare professionals perform at their best. And we are committed to proving it every day.

References: 1. Apelqvist, J., Willy, C., Fagerdahl, A.M. et al. Negative Pressure Wound Therapy – overview, challenges and perspectives; 26:3, Suppl 3, S1–S113. J Wound Care 2017. 2. Willy C, Agarwal A, Andersen CA, Santis GD, Gabriel A, Grauhan O, Guerra OM, Lipsky BA, Malas MB, Mathiesen LL, Singh DP, Reddy VS. Closed incision negative pressure therapy: international multidisciplinary consensus recommendations; doi: 10.1111/iwj.12612; Int Wound J 2016.

www.molnlycke.com.au | www.molnlycke.co.nz

Mölnlycke, 12 Narabang Way, Level 4, Belrose, NSW, 2085. Phone 1800 005 231. New Zealand Orders & Enquiries 0800 005 231, www.molnlycke.co.nz. The Mölnlycke, Avance and Safetac trademarks, names and logos are registered globally to one or more of the Mölnlycke Health Care Group of Companies. ©2022 Mölnlycke Health Care. All rights reserved. AUWC_000170

