

Mölnlycke® Epidermolysis Bullosa (EB) cutting guide



The lightest touch

EB is a rare, inherited group of skin disorders characterised by fragile skin and the formation of blisters after minor trauma or spontaneously, mainly on the hands and feet. For some patients, this means a life overshadowed by pain, distress, endless dressing changes and treatments.

The combination of fragile skin and frequent dressing changes means that atraumatic dressings are recommended to prevent further pain, damage or bleeding¹.

Silicone-based dressings are easier to apply and remove than traditional dressings². They also help protect the wound and periwound skin, creating a favourable environment for wound healing.

Mölnlycke® created Safetac® Technology – the original soft silicone adhesion – specifically to reduce pain and suffering during dressing changes^{3,4}.

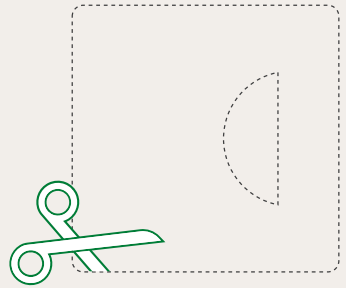
The recommended wound care solutions for managing EB, as set out in the International consensus best practice guidelines skin and wound care in Epidermolysis Bullosa, include several Mölnlycke products, all containing Safetac Technology:

Mepilex® | **Mepilex® Lite** | **Mepilex® Transfer**



Ear

e.g. 7.5x8.5cm

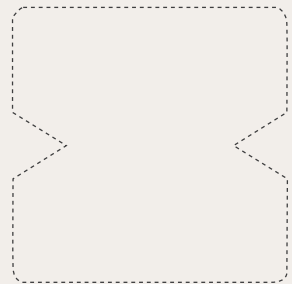


Application



Elbow

e.g. 10x12cm



Application



Between toes

e.g. 10x12cm

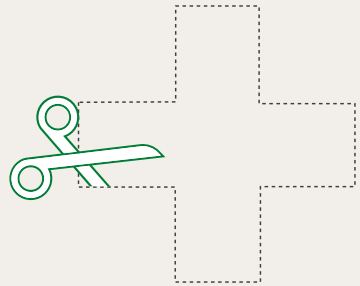


Application



Tip of the toe

e.g. 7.5x8.5cm

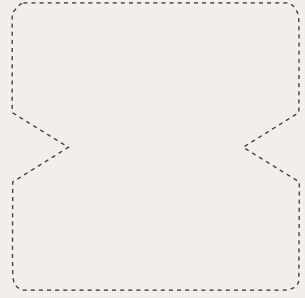


Application



Heel

e.g. 10x12cm

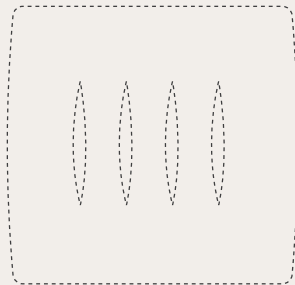


Application



Hand

e.g. 10x12cm

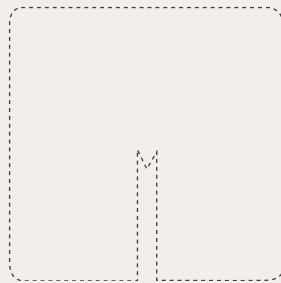


Application



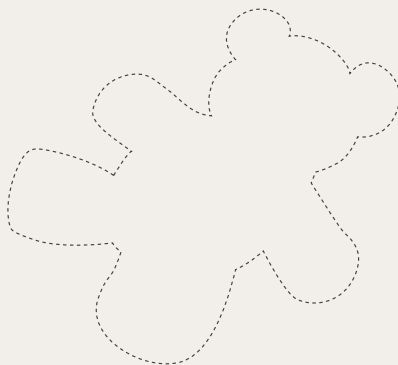
Around tubes

e.g. 7.5x8.5cm



General purpose for younger patients

e.g. 10x12cm



Revolutionise care for people and planet

We drive change that improves the health and wellbeing of patients and those who care for them – while reducing the environmental footprint of healthcare.

References: 1. Denyer J, Pillay E. Best practice guidelines for skin and wound care in epidermolysis bullosa: International Consensus. Vienna: DEBRA; 2012. 2. White R et al. Evidence for atraumatic soft silicone wound dressing use. *Wounds UK*. 2005;1(3):104–9. 3. Dykes PJ, Heggie R, Hill SA. Effects of adhesive dressings on the stratum corneum of the skin. *J Wound Care*. 2001 Feb;10(2):7-10. 4. Waring M, Bielfeldt S, Mätzold K, Wilhelm KP, Butcher M. An evaluation of the skin stripping of wound dressing adhesives. *J Wound Care*. 2011;20(9):412–422.

Find out more at www.molnlycke.com.au | www.molnlycke.co.nz

Mölnlycke, 12 Narabang Way, Level 4, Belrose, NSW, 2085. Phone 1800 005 231.
New Zealand Orders & Enquiries 0800 005 231, www.molnlycke.co.nz.
The Mölnlycke, Mepitex and Safetac trademarks, names and logos are registered globally to one or more of the Mölnlycke Health Care Group of Companies.
© 2026 Mölnlycke Health Care AB. All rights reserved. AUWC_002311

