

Mepilex® Lite

One dressing, customised to fit.

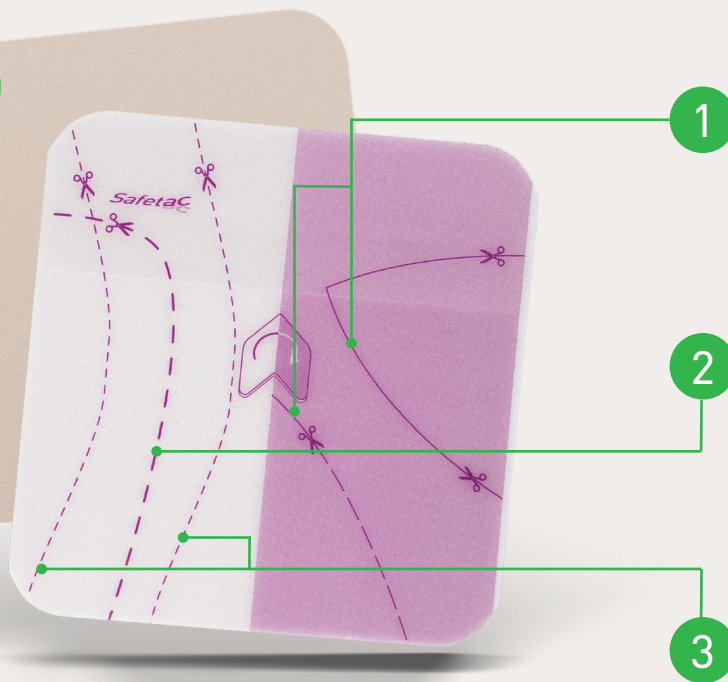
Mepilex® Lite dressings help protect fragile skin and may be used for preventing skin damage under medical devices^{1,2}. An innovative cutting guide incorporated directly on the sterile release liner of the new 12.5 x 12.5cm size provides guidance on multiple cutting options to protect anatomic areas at risk of damage due to prolonged use of medical devices, such as non-invasive respiratory masks and oxygen tubing*.



reddotwinner 2022

*The prophylactic use of dressings in reducing the risk of medical device related pressure injuries is well reported, however their use under PPE in terms of maintenance of a seal and potential impact on viral transmission has not been tested by Mölnlycke or others to our knowledge.

New design



Suggested usage



Application under non-invasive respiratory mask



Application under C-collar



Application under oxygen tubing

Mepilex® Lite
For use with medical devices


Mölnlycke®

Mepilex Lite dressings conform well to difficult to dress areas³

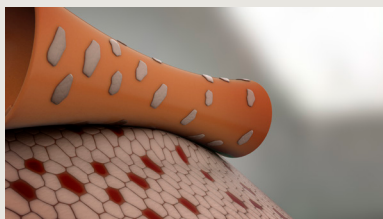
Incorporating cutting guidance directly on the sterile release liner in the dressing unit pack, provides information on how the dressing can be cut and applied to protect specific at-risk anatomic areas such as the forehead, nose, chin and behind the ears. Multiple shape options are possible by folding the dressing and cutting along the guidelines on the purple or white side.

Safetac[®] technology. Less damage. Less pain.

Safetac[®] is the original less-pain contact layer with silicone adhesion, reducing pain and risk of skin damage for patients at dressing removal⁴. Safetac adheres gently to intact skin thereby preventing damage to the skin (e.g. skin stripping), as well as minimising associated pain on removal⁴⁻⁹.



With Safetac



Without Safetac

Ordering information (sterile packed)

Product number	Product size cm (in)	Pcs/box	Pcs/trp
284123	12.5 x 12.5 (5 x 5)	5	50



References: 1. Boesch RP, Myers C, Garrett T et al. Prevention of tracheostomy-related pressure ulcers in children. *Pediatrics*. 2012;129: e792-e797. 2. Cohen LP, Ovadia-Blechman Z, Hoffer O, Gefen A. Dressings cut to shape alleviate facial tissue loads while using an oxygen mask. *Int Wound J*. 2019; 1-14. 3. Mölnlycke Health Care. Data on file. 2005. 4. White, R. A multinational survey of the assessment of pain when removing dressings. *Wounds UK* 2008;4(1):14-22. 5. Strohal R, Mittlböck M, Müller W, Hämmerle G. Management of hard-to-heal leg ulcers with an acidoxidising solution versus standard of care: The MACAN study. *Journal of Wound Care*. 2021;30(9):694-704. 6. Mölnlycke Health Care. Data on File. 7. Woo, K., Coutts, P.M., Price, P., Harding, K., Sibbald, R.G. A randomised crossover investigation of pain at dressing change comparing two foam dressings *Advances in Skin and Wound Care* 2009;22(7):304-310. 8. Rippon, M., Davies, P., White, R., Taking the trauma out of wound care: the importance of undisturbed healing. *Journal of Wound Care* 2012; 21 (8): 359-368. 9. Upton D, Solowiej K. The impact of atraumatic vs conventional dressings on pain and stress. *Journal of wound care*. 2012;21(5):209-15.

Find out more at www.molnlycke.com

Mölnlycke Health Care AB, P.O. Box 13080, Gamlestadsvägen 3 C, SE-402 52 Göteborg, Sweden. Phone + 46 31 722 30 00. The Mölnlycke, Mepilex and Safetac trademarks, names and logos are registered globally to one or more of the Mölnlycke Health Care group of companies. ©2023 Mölnlycke Health Care AB. All rights reserved. HQIM004244



my.molnlycke.com

A QR code gives you direct access to user information. When you scan QR code, you will be taken directly to my.molnlycke.com, where you will find:

- Product details
- Application guide and video
- Instruction leaflet